

on the right track
systems, inc

Installation Guide

Chapters

Pages 1-3

Page 4

Pages 5-7

Page 8

Page 9

Parts Glossary

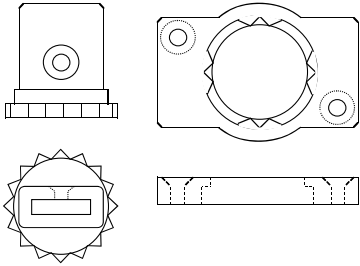
Special Install Instructions

Parts Assembly

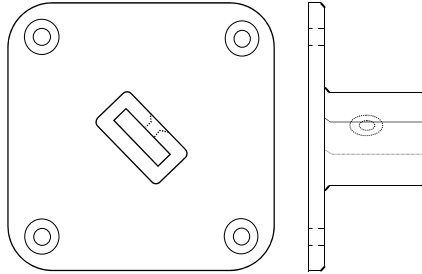
Extensible Tubes

Spec Sheet

Chapter 1: parts glossary



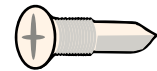
Part # OPTS-S02
Swivel Clip with Drop
Ceiling Grid Mounting Plate



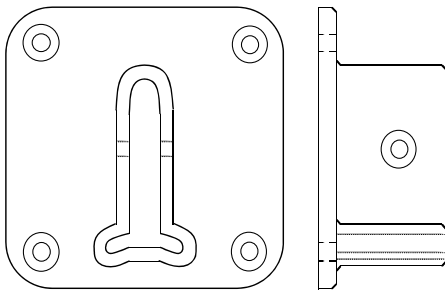
Part # OPTS-B02
Hard Ceiling Mounting Plate



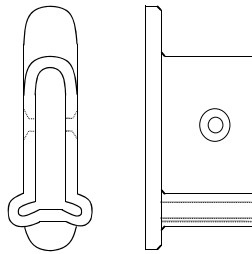
Part # set screw
OPTS-S102
5/32"x8mm



Part # OPTS-S302
5/32"x13mm self tap screw



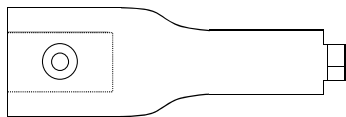
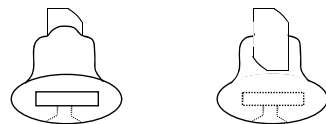
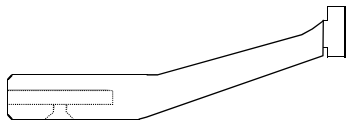
Part # OPTS-C02
End Wall Plate



Part # OPTS-M02
End Cap



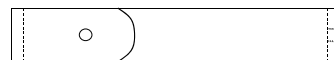
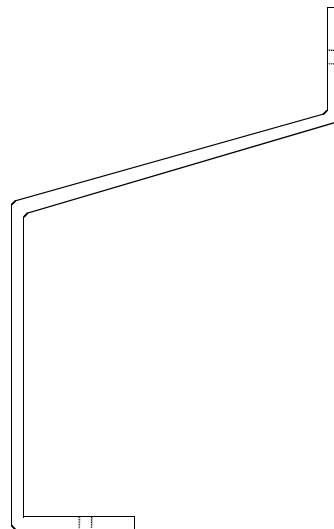
Part # OPTS-S402
5/32"x1-1/4" mount screw



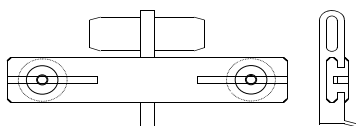
Part # OPTS-E02
Hanger & Track Connector



Part # OPTS-S502
Plastic Anchor

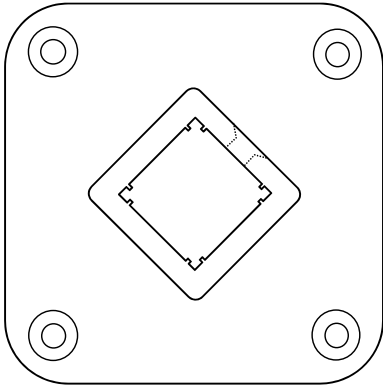


Part # OPTS-G02
Hanger

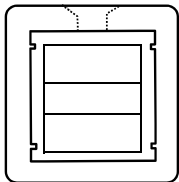
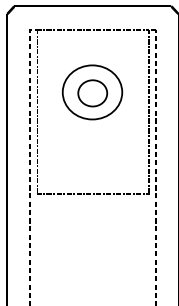
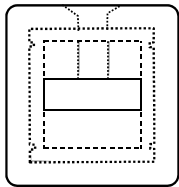
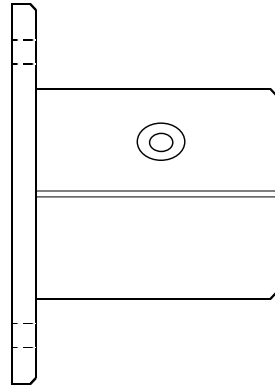


Part # OPTS-F02
Track Connector

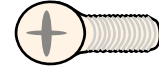
Chapter 1: parts glossary



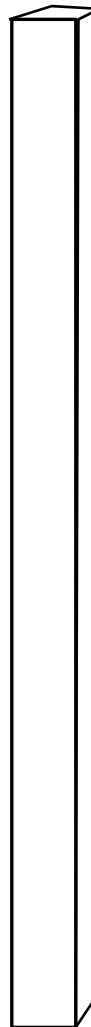
Part # OPTS-P02
Ceiling Vertical Mount Plate



Part # OPTS-D02
Hanger & Tube Connector

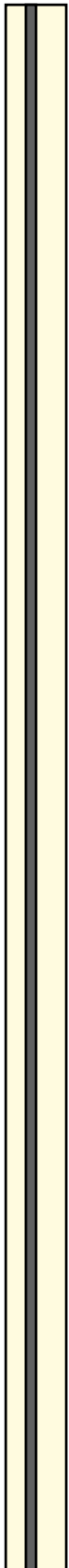


Part # set screw
OPTS-S602
5/32"x13mm

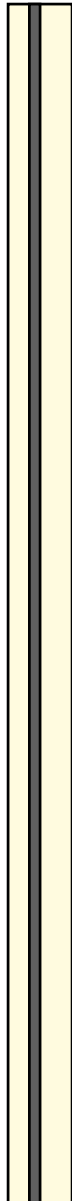


Part # OPTS-J02
Extensible Square Tube

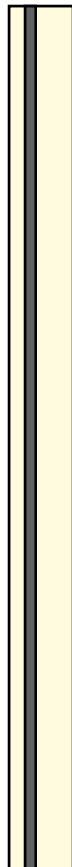
Chapter 1: parts glossary cont.



Part # OPTS-H802
180° 8 Ft Track



Part # OPTS-H502
180° 5 Ft Track



Part # OPTS-H402
180° 4 Ft Track

Curved Track part numbers*

Part # OPTS-K102
90° 1 Ft Radius Track

Part # OPTS-K1R02
90° Reversed 1 Ft Radius Track

Part # OPTS-K202
90° 2 Ft Radius Track

Part # OPTS-K2R02
90° Reversed 2 Ft Radius Track

Part # OPTS-L102
135° 1 Ft Radius Track

Part # OPTS-L1R02
135° Reversed 1 Ft Radius Track

Part # OPTS-L202
135° 2 Ft Radius Track

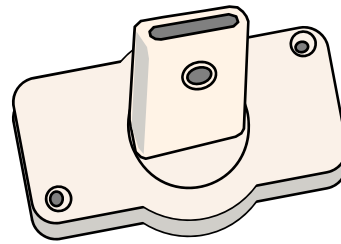
Part # OPTS-L2R02
135° Reversed 2 Ft Radius Track

*Contingent on Installation needs

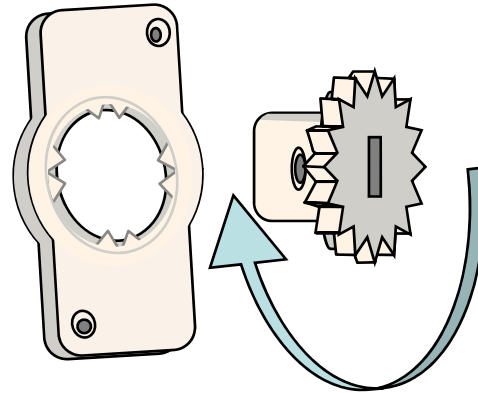
Special Installation Instructions

Drop Ceiling Grid Mount

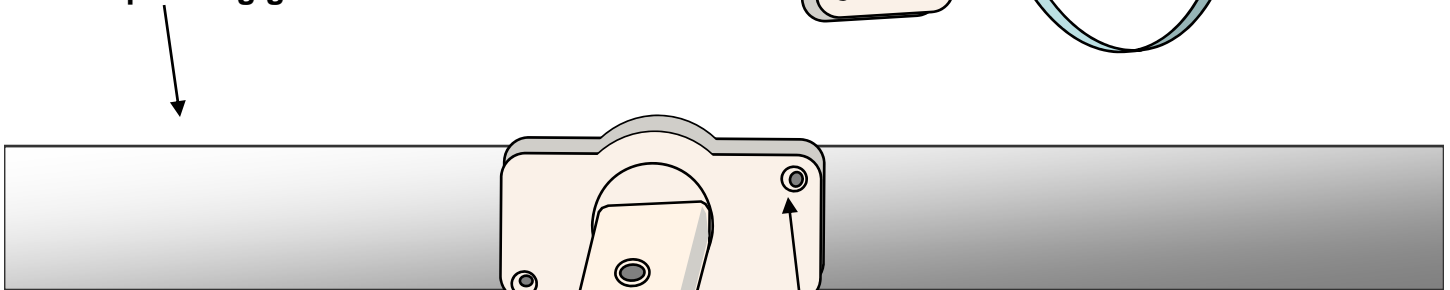
The “Drop Ceiling Grid Mount” is a two piece mount. The center of the mount can be positioned and locked in place prior to attaching to drop ceiling grid work.



The center of the mount can be placed in one of 8 positions to accommodate installment needs.



Drop ceiling grid.

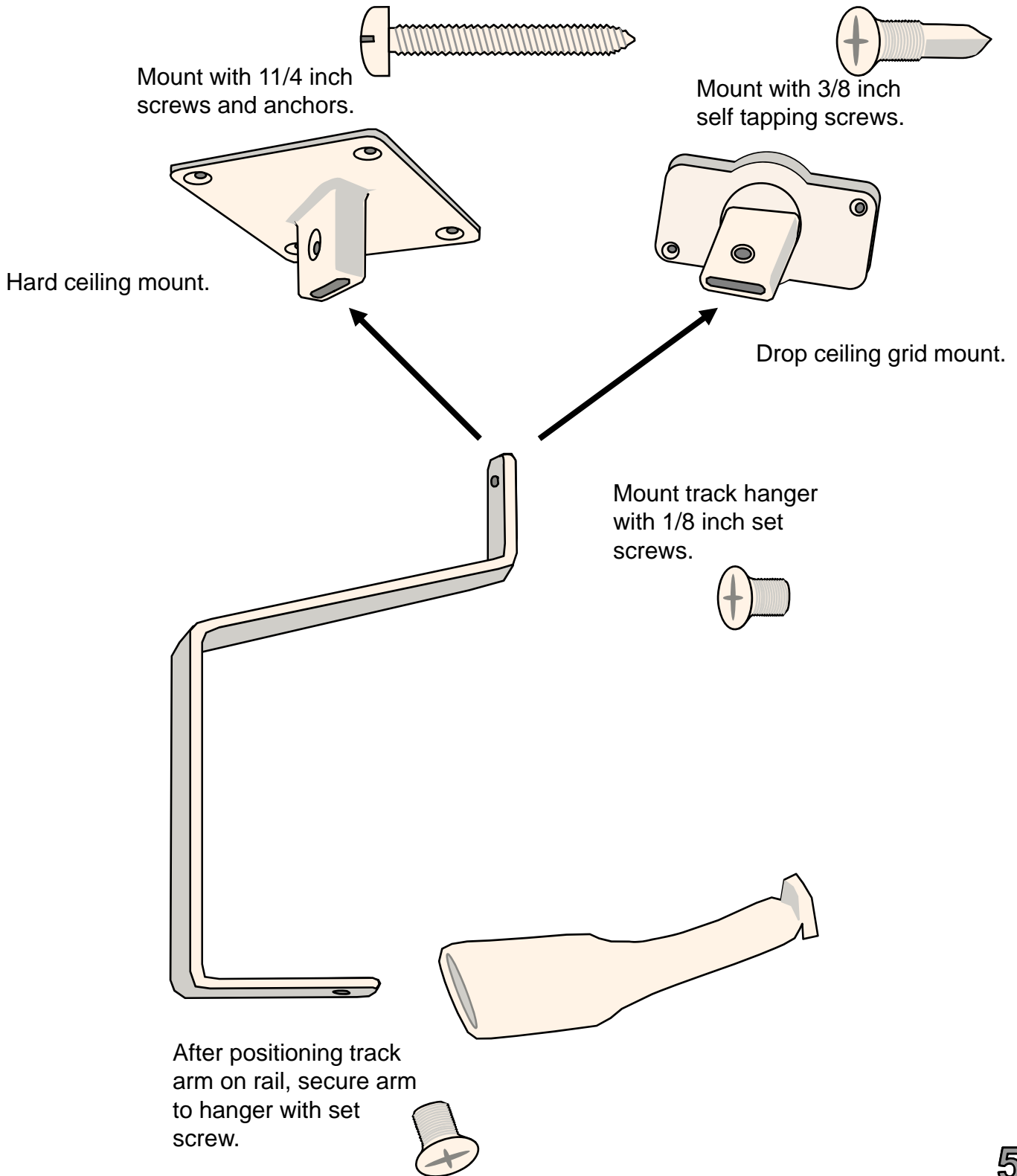


Use the self tapping screws to attach to ceiling grid.



Installation Instructions

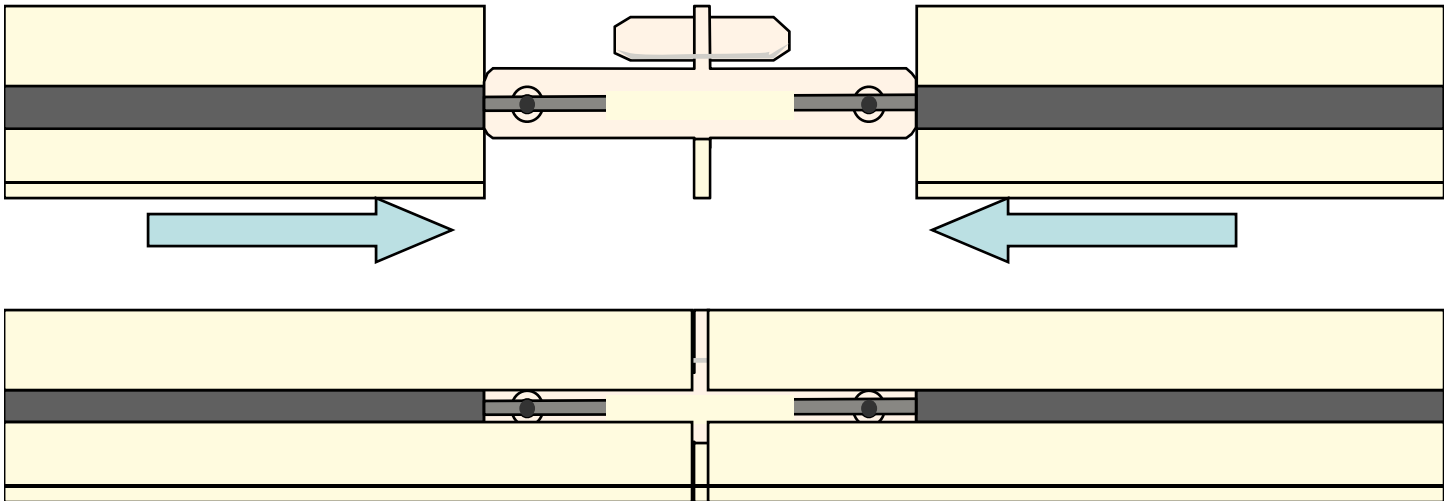
PARTS ASSEMBLY



Installation Instructions

PARTS ASSEMBLY

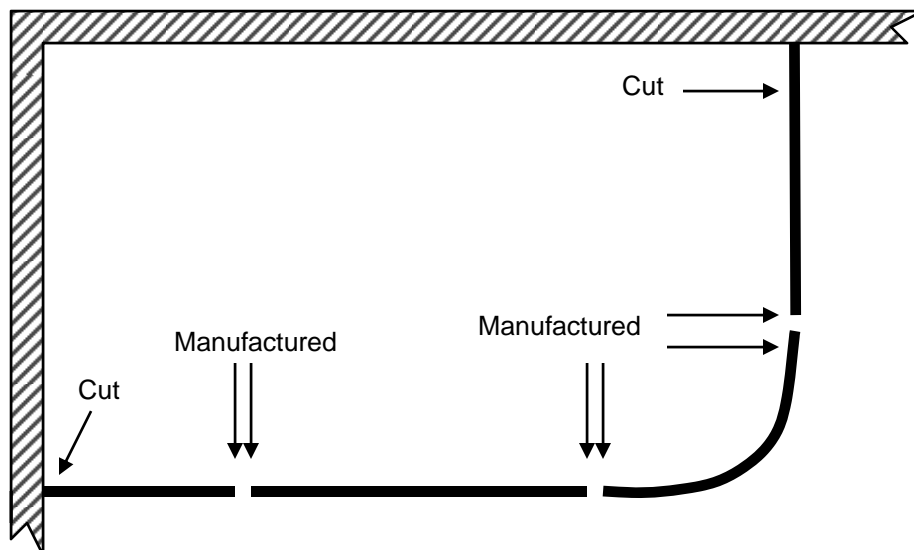
Join track pieces by sliding the **Track Connector** into each adjoining end of track.



Once the **Track Connector** is in place, secure with **Set Screws**.

SPECIAL NOTE: During the installation process it will become necessary to cut track to fit. Be sure to take care in cutting the end of the track that does not join to another track. Manufactured ends of track are ideal for joining with connector. Cut ends may be capped off at the end of the track using the **End Cap** or the **End Wall Plate**.

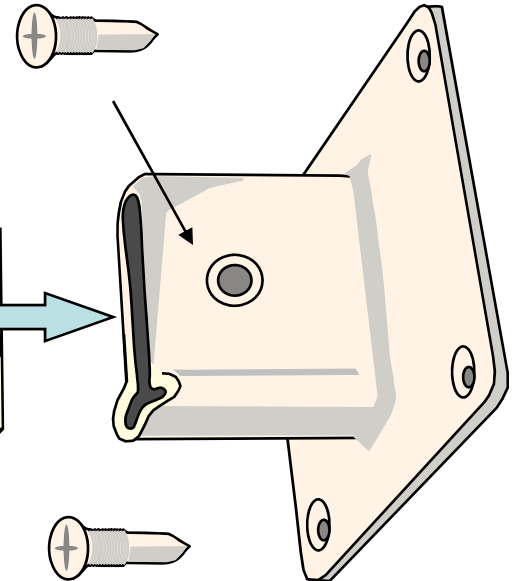
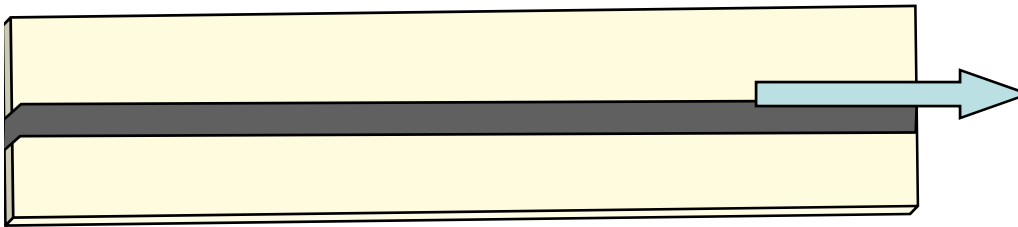
Example:



Installation Instructions

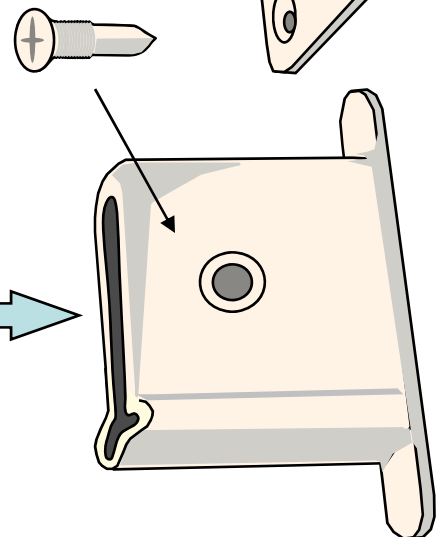
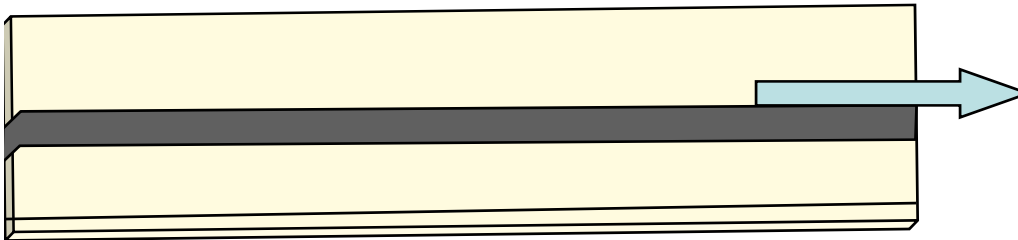
PARTS ASSEMBLY

To connect **End Wall Plates*** and **End Caps**, simply slide into place and secure with **Self Tap Screw**.

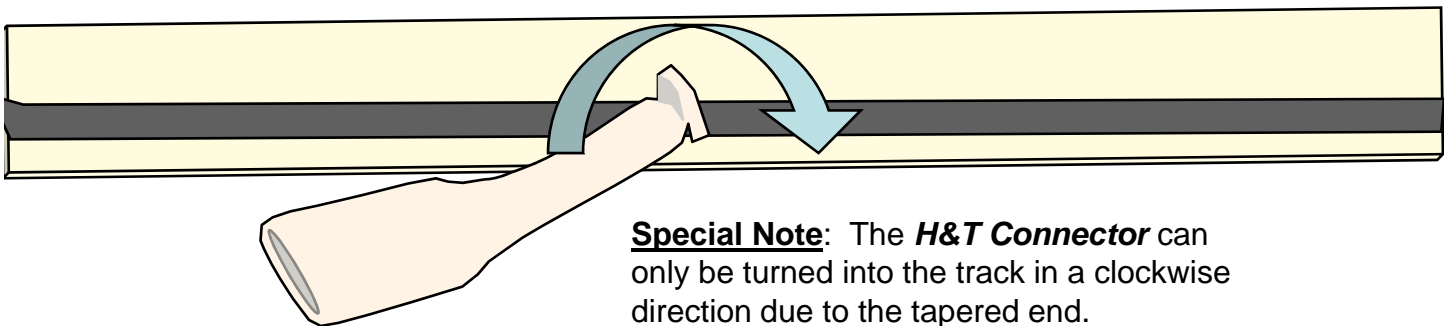


***Special Note:** Securing the **End Wall Plate** with the **Self Tap Screw** will be the last step in the entire installation.

(This does not apply to the **End Cap**, feel free to secure with **Self Tap Screw** after determining proper length of track.)



One of the final steps of installation involves placing the **Hanger & Track Connector**. Place the end of the **H&T Connector** into the groove on the back side of the Track and turn clockwise 1/4 turn. This will lock the **H&T Connector** into place. To reposition, simply reverse the process.

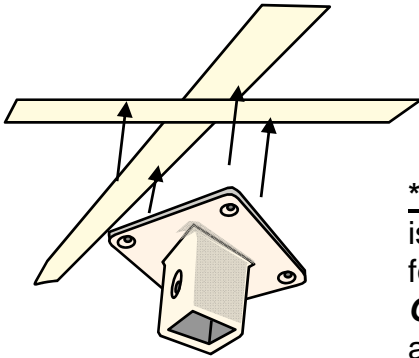


Special Note: The **H&T Connector** can only be turned into the track in a clockwise direction due to the tapered end.

Installation Instructions

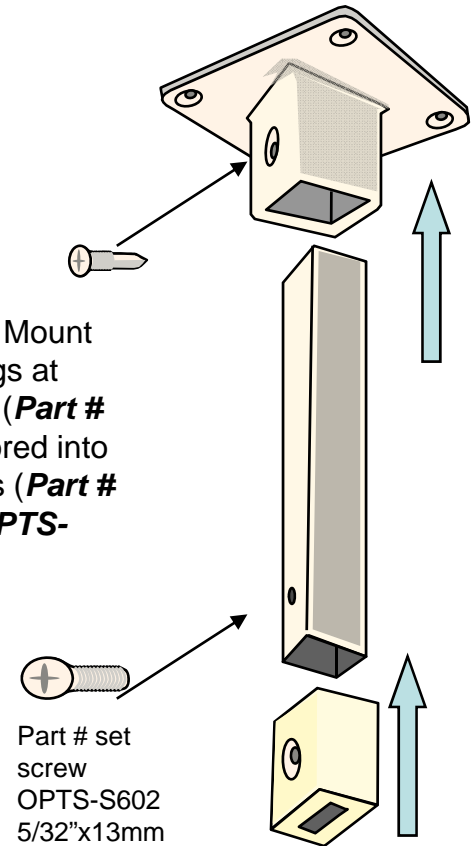
Extensible Tubes

To connect **Extensible Tube** to the **Ceiling Vertical Mount Plate**, you may need a rubber mallet to completely insert the tube. **Do this before you attach the mount plate to the ceiling.** The mount plate is designed to taper so that once the tube has been completely inserted it will not flex. Be sure to insert cut end or end that **does not** have the manufactured hole.

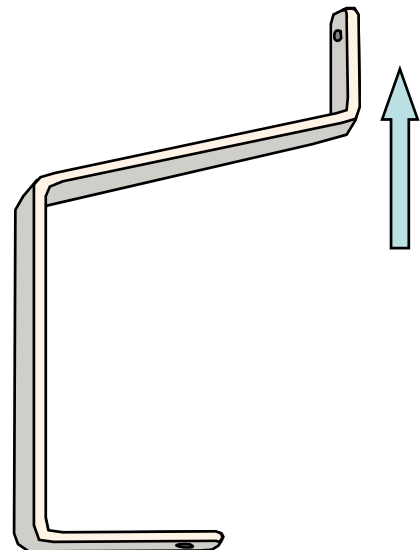


Insert **Hanger** into **Tube/Hanger Connector** and secure with long set screw.

***Special Note:** The Ceiling Vertical Mount is designed to attach to grid crossings at four points, with self tapping screws (**Part # OPTS-S302 5/32"x13mm**) or anchored into a gypsum board ceiling with anchors (**Part # OPTS-S502**) and screws (**Part # OPTS-S402 5/32"x1-1/4"**).

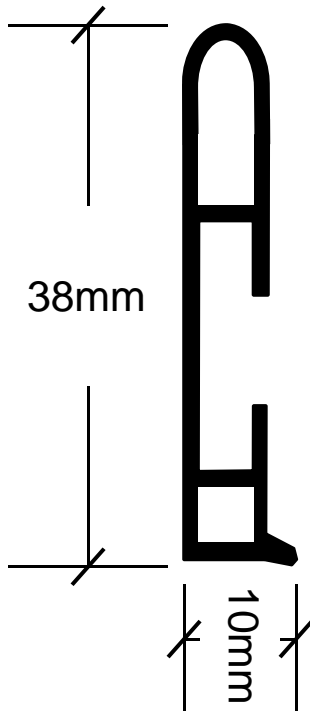


Special Note: Extensible tubes can be used to drop the rail up to 18".

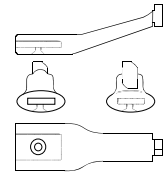


MATERIAL	Extruded Aluminum
FINISH	White Baked Enamel
BENDS	All bends shall be between 12" and 24" radius up to 90 degrees
CONNECTORS	Extruded aluminum hangar and nylon assembly parts.

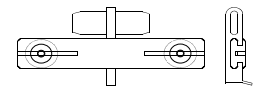
0174RT Track Detail



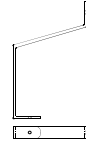
OPTS-E02



OPTS-F02

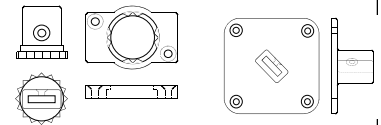


OPTS-G02



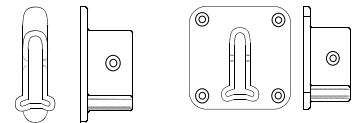
OPTS-S02

OPTS-B02



OPTS-M02

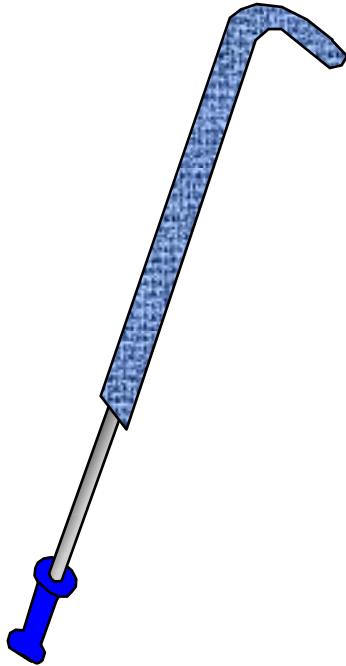
OPTS-C02



ARCHITECT		DATE	
CONTRACTOR		DATE REV	
DISTRIBUTOR		DRAWN BY	
PROJECT		JOB #	
		SHEET	

Track Maintenance

(The Only Track Maintenance You will Ever Need)



Step 1:

Bend the end of a micro-fiber high-duster head at a 90 degree angle.

Step 2:

Spray the inside of curve of the high-duster head with "***Pledge Revitalizing Oil***".



Step 3:

Run the high-duster along the top of the rail to clean and maintain "***Quiet Glide***".